



Clear-line™ aligners

Ask your dental professional about Clear-line



Clear-line™ aligners



Clear-line™ aligners



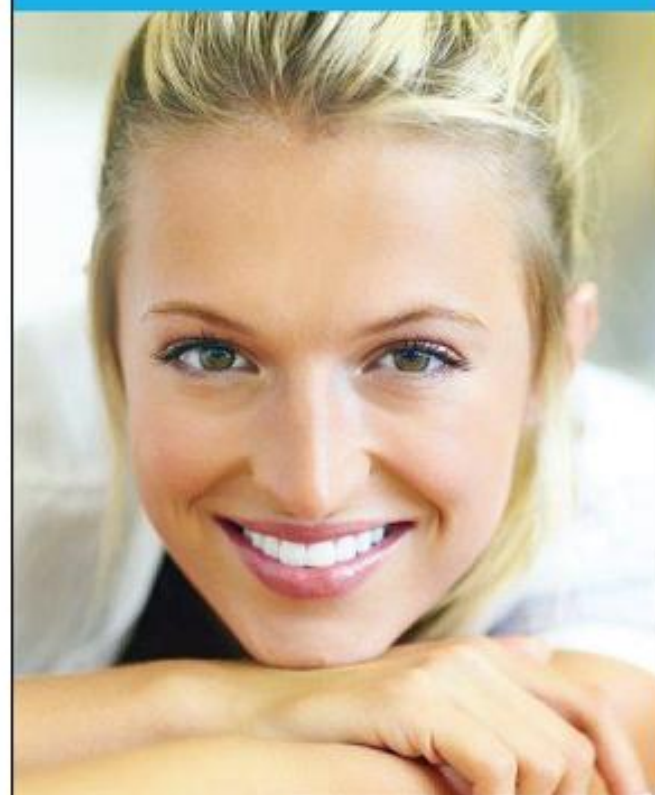
A clear solution to wearing braces



Alfodontics
Dental Lab

www.alfodontics.com.au

Clear-line is a registered trademark of Alfodontics Dental Lab Pty Ltd



The clearest way to straighten teeth without braces

What is Clear-line

The Clear-line aligner system is designed for patients wanting a clearer more aesthetically pleasing solution to wearing braces. Clear-line uses a series of clear, custom-made aligners to gradually move the teeth into their desired position. Patients using the Clear-line system achieve results without feeling conscious about their appearance during treatment, its practical and easy to wear. Orthodontists and Dentists have widely used the Clear-line aligner system for many years, as a solution to accurately realign teeth and achieve the perfect smile for their patients. Clear-line is highly recommended for the management of finishing relapses and simple treatments not requiring prior band ups.

How does it work

The Clear-line aligner system works by applying constant gentle pressure that steadily moves the teeth from where they are, to where your dental professional thinks they should be. Each aligner movement is formulated accurately and specifically to the treatment plan. Clear-line uses the latest in digital technology to achieve the perfect alignment of teeth that is discussed with your dental professional.

The clearest way to straighten teeth without braces



Treatment with braces



Treatment with clear-line



**Easy to use
and maintain
Clear-line**

How long do I have to wear it

Patients will receive a series of aligners, each aligner is individually numbered. The aligners are to be worn between 2 to 3 weeks intervals, inclusive nightly to maintain treatment, when course complete, change to the next aligner. Each aligner movement is formulated individually ask your dental professional the desired time of wear for your individual case. On each initial first wear of aligner, it will feel very firm and tight over the teeth. This is due to the teeth being repositioned and moved into their new alignment. Eventually after a few days the aligner will feel comfortable and not tight due to teeth being repositioned. Patients can take them out for special occasions, brush and floss as normal throughout their course of treatment.



Care Instructions

Clean prior to each wear, rinse under cool or room temperature water. Do not rinse aligners in hot water, heat will distort your aligners. Remove aligners when eating and drinking exemption being water. Do not wear if consuming hot beverages. To clean, use a soft bristle toothbrush with water and gently brush do not use tooth paste.

Speak with your dental professional about the Clear-line aligner system. Clear-line is Australian made & owned.

